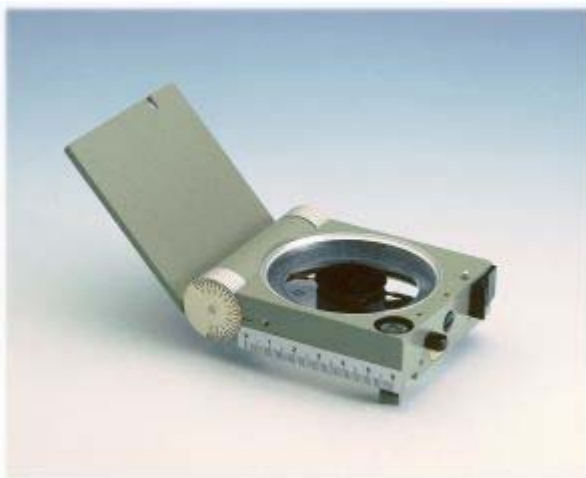


Magnetic Compasses

Compasses, stratum



Small stratum compass No. 3019 GEKOM
for geological students, measuring azimuth and dip of azimuth in one operation, graduation interval 2°



Stratum compass No. 3180 COCLA
according to Prof. Dr. Clar, for geological and tectonic measurements, for measuring azimuth and dip of azimuth in one operation, graduation interval 1°, eddy current damping transparent bottom and level (see photo l.h.s.)



Geological data collector for stratum measurements No. 3300 ELECTRONIC 4000

an electronic stratum compass for measurements according to Prof. Clar, in one single operation both azimuth and dip of azimuth are electronically measured, displayed in the LCD-window and stored (see photo l.h.s.)

Compasses, geological

Small geological compass for students No. 3247 COSTU

with liquid damping for all simple geological surveys, hinged mirror, graduation interval 5°, pendulum clinometer

Geological compass with clinometer**No. 329 CONEF**

for geological, geophysical and mining measurements, base plate 100x120 mm, graduation interval 1°, pendulum clinometer

**Universal pocket transit No. 370 COBRU**

(Brunton type), for geological, geophysical, mining geological, forestry measurements, and setting out, graduation interval 1°, hinges mirror, level controlled clinometer, accessories available

Geological compass with mirror and sights No. 331 COVIS

of universal use for geological measurements, base plate 80x100x2 mm, hinges mirror, graduation interval 1°, pendulum clinometer, accessories

Compasses, surveying**Prismatic compass 4 inch. diameter No. 3010 COPRI**

prismatic reading on an oscillating ring, sighting device, graduation interval 1/2°, accessories available

Electronic surveying compass No. 3306 TOPOSENSOR**Compasses, military****Orientation compass No. 3245 CONAT**

with liquid damping, robust metal housing, hinged mirror, graduation 6400'

Compasses, mining**Mining engineer's compass****No. 350 COHEN**

for mining and tectonic measurements, graduation interval 1°, pendulum clinometer

Mining suspension compass**No. 339 COMTA**

for measurements in mines and quarries, needle length 80 mm, graduation interval 1°, **clinometer No. 340 COGRA** +/- 90°, graduation 1/4°, **robust wooden case No. 345 MARTA**